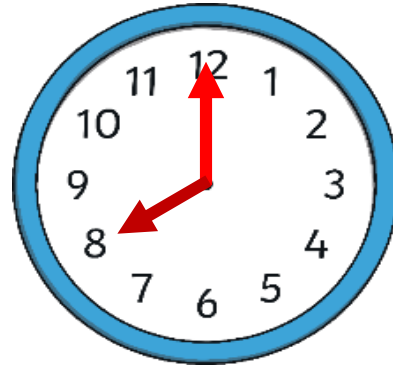


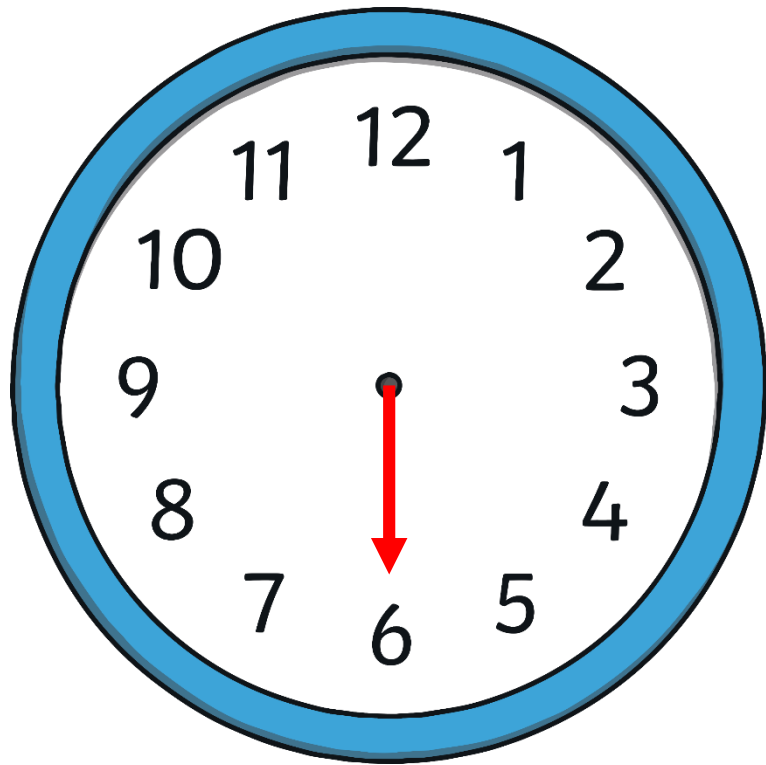
# Day 4: What do you remember?

Yesterday What time does this  
clock show?



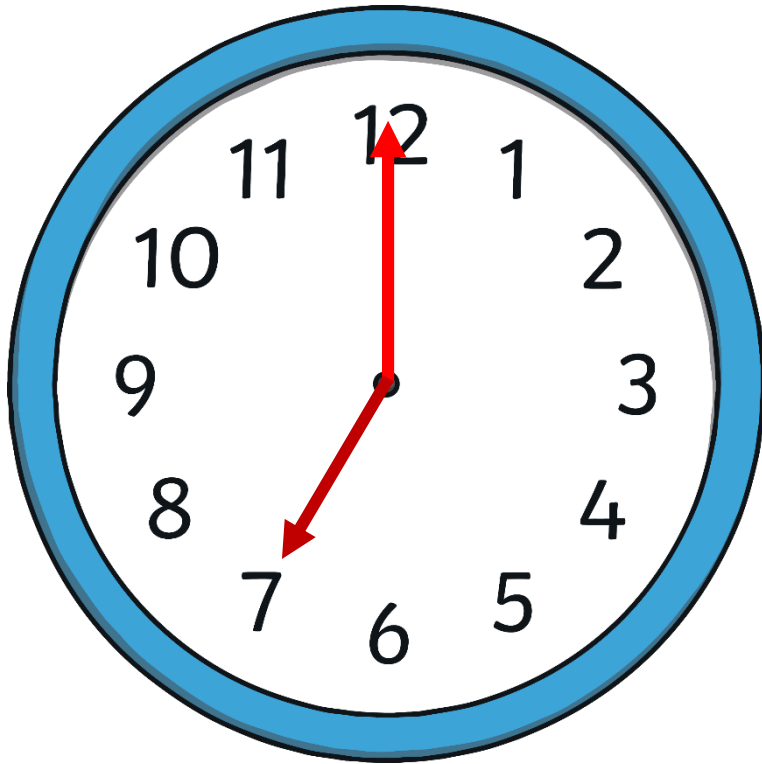
LO: I can recognise 'half past'  
time

We know when the big hand is on 12 it means 'o'clock'. But what happens when its going round for the rest of the hour.

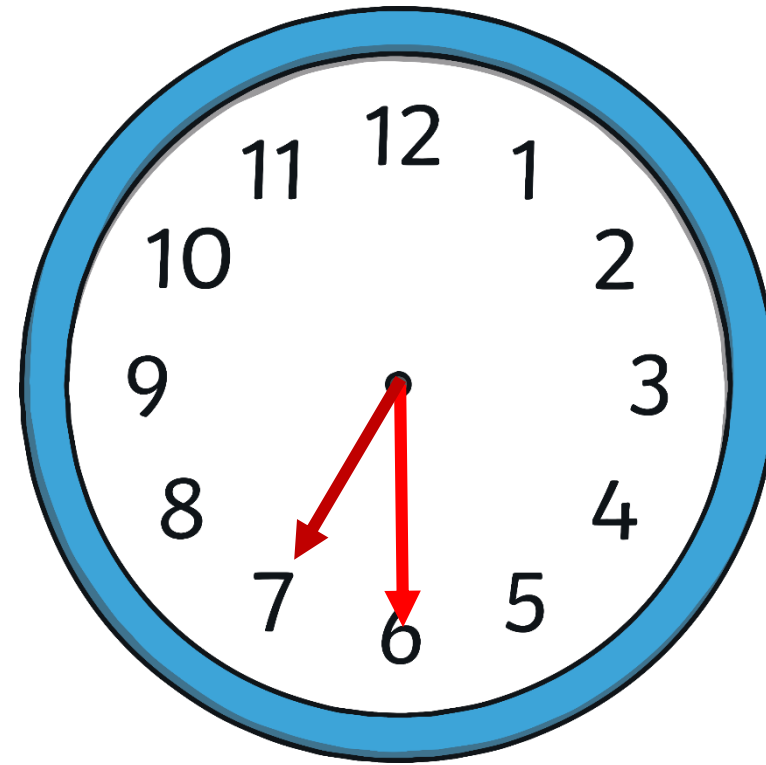


We are going to focus on a new phrase today. Instead of 'o'clock' we are going to talk about 'half past'

**Half past is when the big hand is on the 6.**

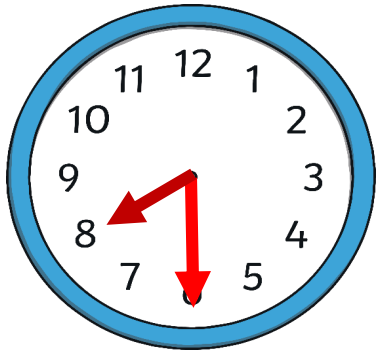


This clock is showing '7 o'clock'

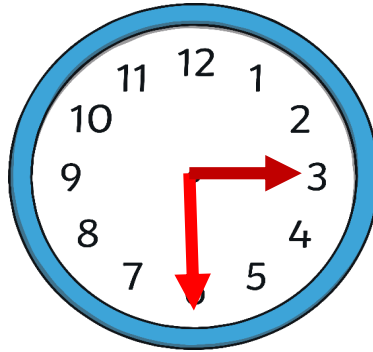


This clock is showing 'half  
past 7'

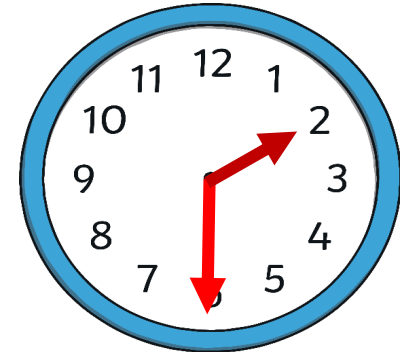
# Here are some other examples of 'half past'



'Half past 8'



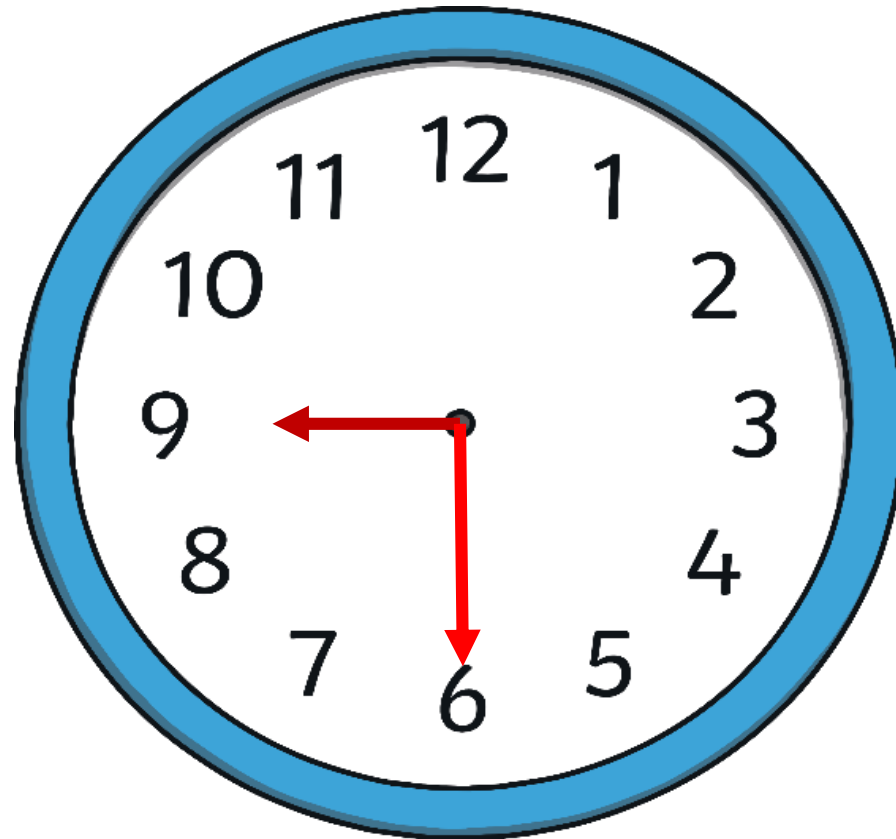
'Half past 3'



'Half past 2'

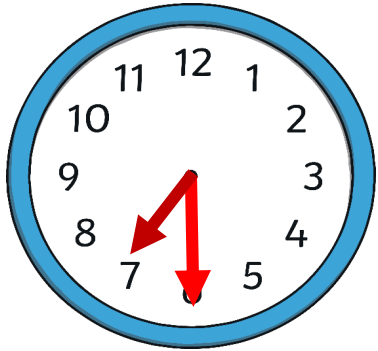
Its important that we remember the small hand  
still tells us the hour!

If the small hand is pointing at the 9 where will the big hand be pointing to show 'half past 9'

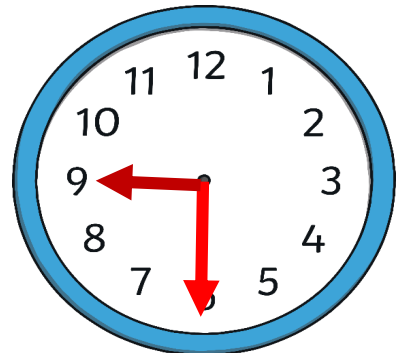
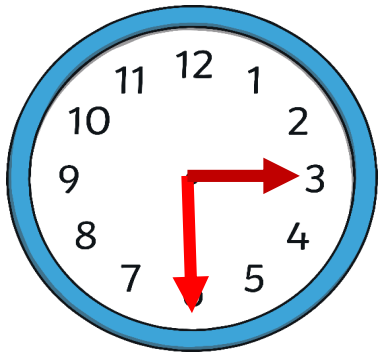
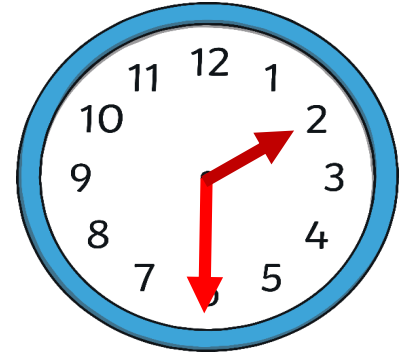


That's right!  
It will be  
pointing at the  
6!

# What 'half past' times are these clocks showing?

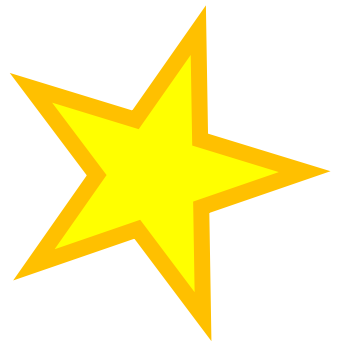


Connor gets to work at 'half past 7'. Chris gets to work at 'half past 9'. Which clock face is showing the time they get to work?





# Challenge



See if you can shout 'BOO' to an adult  
whenever you see a 'half past' time!

Remember its when  
the BIG hand is  
pointing at the 6!