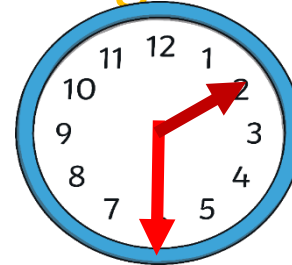


Day 5: What do you remember?

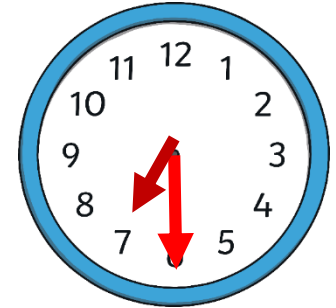
Yesterday... What time is showing on this clock?



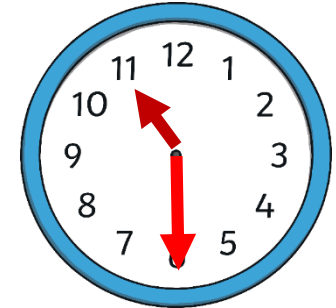
L:O To identify 'o'clock' and
'half past' clock times
successfully

Can you match these times to their clocks?

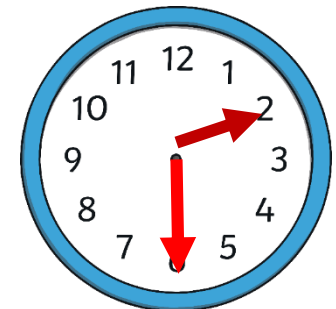
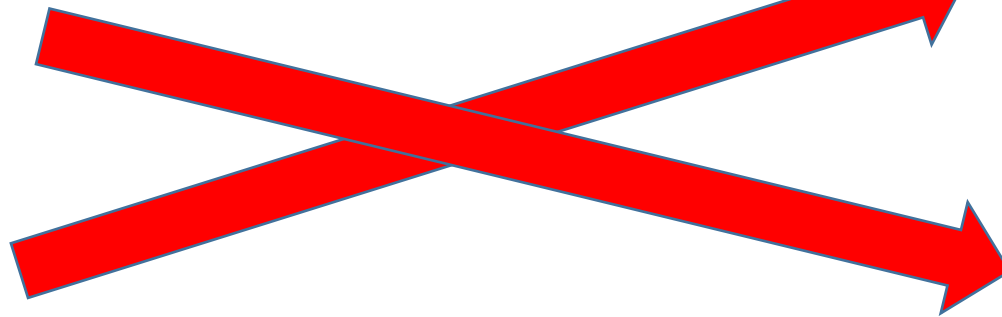
Half past 7



Half past 2



Half past 11



Using your whiteboard draw your clock with numbers and have a go at drawing the hands to show the times below

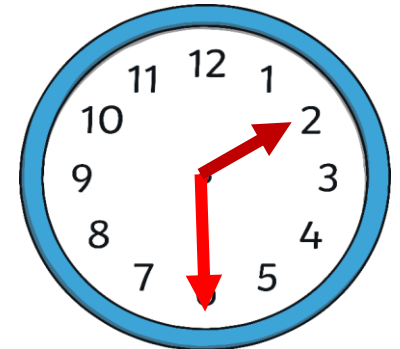
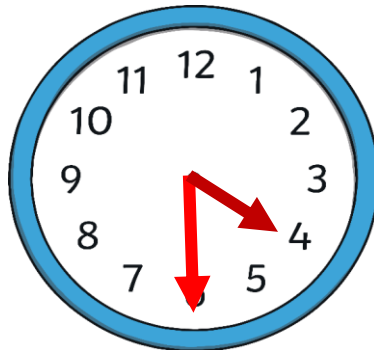
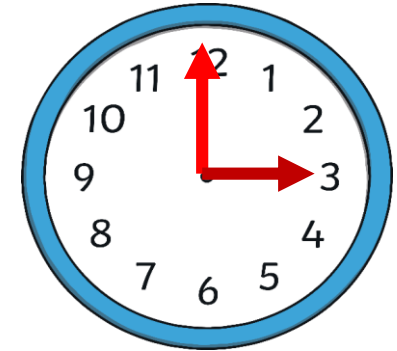
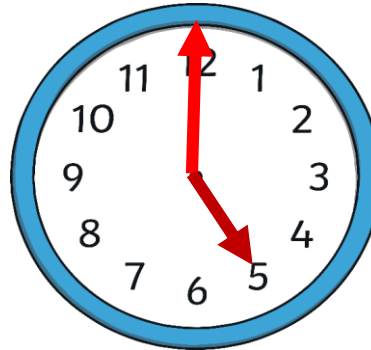
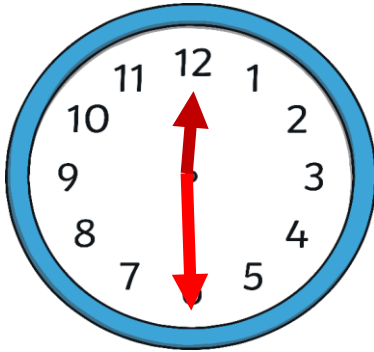
Half past 10

Half past 5

Half past 1

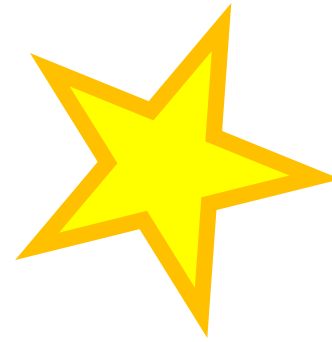
Think carefully about where each hand needs to be pointing!

Chris likes to have a coffee at 'half past 4'. Connor likes to have his coffee at '5 o'clock'. Can you read the times on these clocks and find the clocks showing these times?





Challenge



Have a go at drawing some 'o'clock' and 'half past' times and see if an adult can guess the right time!